



**CHROPYNSKA**

Engineering. Production. Flexibility.

**Machine and Technology  
Capabilities** | 



# Machine Park

## Production Facilities

Our production facilities are equipped to handle both one-off and small-batch manufacturing, ensuring flexibility, efficiency, and uncompromising quality. We continuously invest in advanced technologies to expand our capabilities and improve productivity.

### Material Preparation Laser / Water / Plasma Cutting

Materials worked with: Titan, ArmoX, Aluminium, ...

### Welding

Materials worked with: Steel, ArmoX, Stainless Steel, Aluminium

### CNC-Machining on 3 and 5 axis

Machined parts size up to 12.000mm and 35t

### Heat and Special Surface Treatment

### Sand Blasting

### 3D Measuring

Painting - Painting parts up to 8.400 x 4.000 x 3.000mm

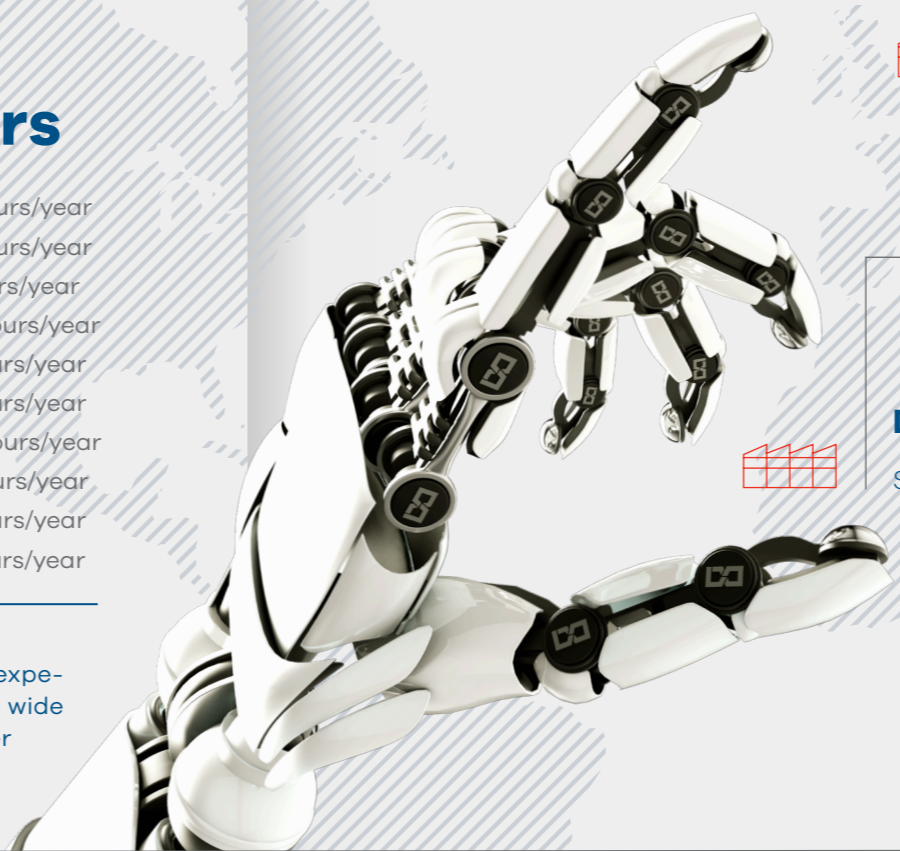
## Manufacturing Capacities in Hours

Cutting	120 000 hours/year
Welding	120 000 hours/year
Bending	10 000 hours/year
3D machining	430 000 hours/year
Surface treatment	40 000 hours/year
Painting	40 000 hours/year
Mechanical assembly	300 000 hours/year
Electrical assembly	110 000 hours/year
3D measuring	90 000 hours/year
Logistic	80 000 hours/year

The combination of versatile machinery and experienced professionals enables us to process a wide range of materials and meet diverse customer requirements.

# CHROPYNSKA GROUP

## Production Facilities



### Chropyne / Prostejov

Czechia

### Pune

India

### Detva

Slovakia

### Baia Mare

Romania

**CERTIFIED QUALITY AT EVERY STEP**

ISO 9001

ISO 14001

ISO 45001

ISO 50001

DIN 2303

EN 1090

EN 15085-2

EN ISO 3834-2

TISAX

EMAS

ECOVADIS

## Capabilities

**CUTTING**

50 +

**WELDING**

60 +

**BENDING**

3 +

**3D MACHINING**

200 +

**SURFACE TREATMENT**

10 +

**PAINTING**

20 +

**ASSEMBLY**

200 +

**3D MEASURING**

40 +

**LOGISTIC**

40 +

**Overall Production Manpower**


623 +



See full machinery park details



# CHROPYNE / PROSTEJOV

  
**30,000**  
square meters

**337**  


  
**Czechia**



## Precise / Automated / High-performing

### Ultra-precise 5-axis machining

Ideal for mold production and all types of jigs and fixtures – handling parts up to 35 tons.

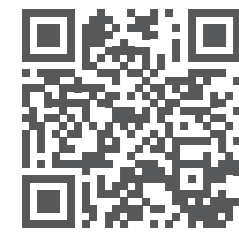
### High-speed CNC machining

Fully automated with robotic loading for maximum efficiency and reliability.

### Electrical switchgear production

Comprehensive solutions for custom electrical distribution cabinets.


**Robotic welding workstations** for prototype and small-batch production.



[www.chropynska.cz](http://www.chropynska.cz)



# DETVA

  
**12,000**  
square meters

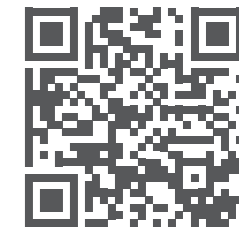
**304**  


  
**Slovakia**



## Skilled / Powerful / Innovative

Production and assembly hall adapted for **large assemblies and fixtures**.  
Specialization in equipment for **railway technology, aerospace, and other highly demanding industrial sectors**.  
Tailored solutions **from concept to full-scale assembly**.



[www.chropynska.sk](http://www.chropynska.sk)



# BAIA MARE



376



55,000

square meters



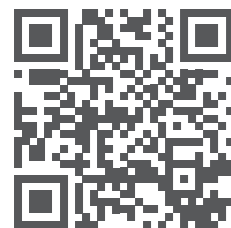
Romania



Flexible / Capable / Productive

**Extensive manufacturing capabilities** with CNC sheet processing using **laser and waterjet cutting**, and **modern bending machines**.

A wide range of **CNC machining equipment** for both large and small parts up to 8 meters in length.



www.ramira.ro



# PUNE



200



10,500

square meters



India



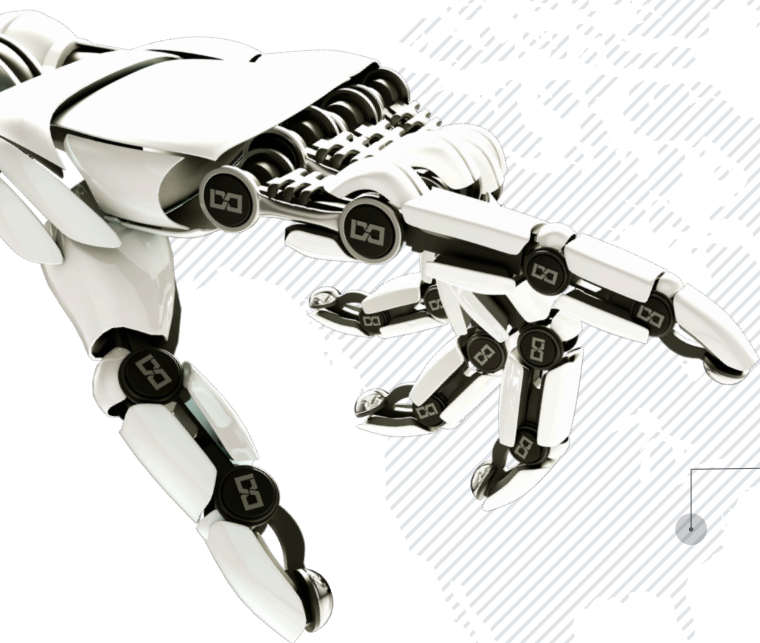
Reliable / Scalable / Global

**Spacious assembly halls** with in-house rigorous quality control.

**Extensive, highly flexible production capacity** powered by a trusted subcontractor network. Production of parts and complete assemblies for projects **across Asia, Europe, and the USA**.



www.chropynska.com



# **CHROPYNSKA**

 **Columbus**  
USA

 **Cologne**  
Germany

 **Mlada Boleslav**  
**Prostejov**  
**Olomouc**  
**Chropyne**  
Czechia

 **Gliwice**  
**Lublin**  
**Poznań**  
**Rzeszów**  
Poland

 **Swindon**  
England

 **Detva**  
**Trencin**  
Slovakia

 **Baia Mare**  
**Sibiu**  
 **RAMIRA**  
Romania

 **Pune**  
India

[WWW.CHROPYNSKA.COM](http://WWW.CHROPYNSKA.COM)

**Headquarters::**  
Komenskeho 75  
CZ-768 11 Chropyne

**Direct contact::**  
[sales@chropynska.com](mailto:sales@chropynska.com)